



**WORLD'S BEST
ALLOY BULLBARS**

**Strongest Built
Australian Made
Lifetime Warranty**

PN:B3FU5020SY



Fitting Guide & Owners Manual

**FUSO Canter Narrow Cab
With Safety Pack
2019 on**

Deluxe 3 Protection Bar
VEHICLE FRONTAL PROTECTION SYSTEM (VFPS)
FOR AIR BAG & ADR COMPLIANT VEHICLES

Index

Pages 3-5

ECB's Benefits
Product Care

Pages 6-7

Stage 1 - Vehicle Testing and Preparation
Stage 2 - Remove bumper & sonar cover
Stage 3 - Tow hook & support brackets
Stage 4 - Remove indicator
Stage 5 - Electrical wiring
Stage 6 - Remove sonar

Pages 8-9

Stage 7 - Fit mounting bracket
Stage 8 - Sonar fitment
Stage 9 - Indicator/park light
Stage 10 - Install sonar cover
Stage 11 - Fit protection bar
Stage 12 - Check tilt and wiring

Pages 10-11

Final Checks
Installation Kit

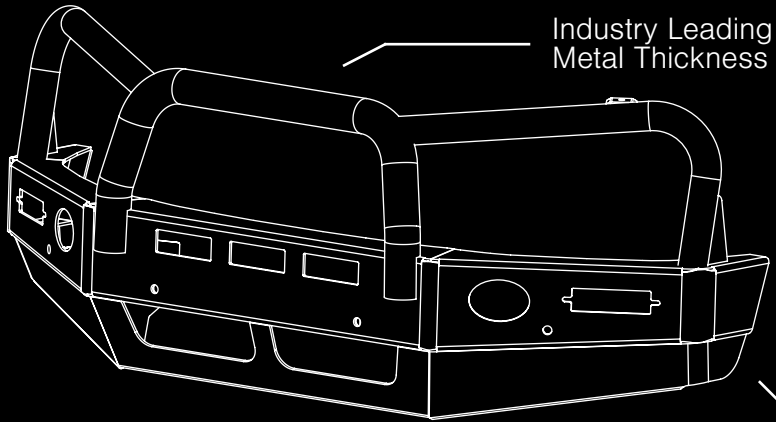
Pages 12-13

Finished Product
Warranty Registration

Pages 14-15

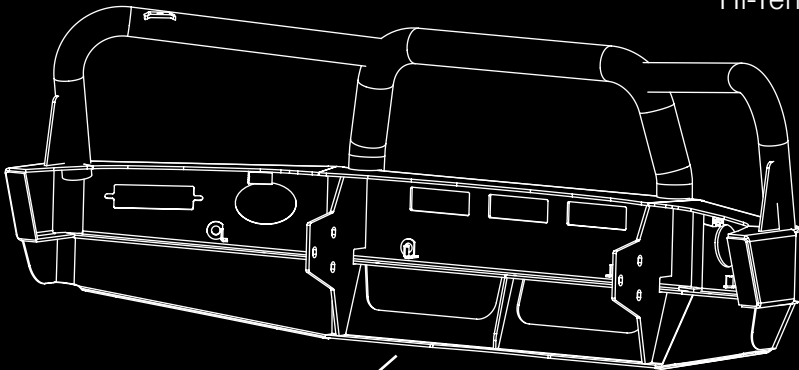
Notes

The Features of Custom Alloy



Industry Leading
Metal Thickness

6mm Thick
Hi-Tensile Alloy



Unmatched
Strength

Fully Welded
Construction

Custom Alloy's Benefits

Built to Perform - Not to a Price

ECB are proud to claim that their channels are not jigsaw puzzles that are bolted together, or even multiple sections welded together. Where any welding is required, it is done to the highest standards by qualified welders, not machines.

Anti-Corrosive Nature of Alloy

The composition of ECB's alloy has a very high resistance to corrosion. Rust not only looks unappealing but greatly reduces the strength of the metal. Rust can and will weaken the structural integrity of a steel bullbar effectively rendering it useless over time.

Australian Made

We utilise decades of experience designing, engineering and building products in Australia to suit Australian conditions. We can ensure the best quality controls and help support the local economy and employ over 90 proud Australians.

Weight Saving Benefits

An ECB bullbar is typically half the weight of a steel bullbar. Unnecessary suspension upgrades are not required. The reduced weight also contributes to increased fuel economy and less wear and tear on tyres, suspension and braking components.

Welds That Work

ECB uses only the strongest welds and welding techniques to ensure every product is as structurally sound as possible. MIG (Metal Inert Gas) welding techniques are employed ensuring the welds are as thick as the thickest section of alloy's being joined together.

Lifetime Warranty

ECB provide a lifetime warranty and consumer guarantee on all of our manufactured products. This guarantee highlights the confidence in our ability and provides complete peace of mind for your purchase for the lifetime you own your vehicle.

Product Care

Polished Products

Being a premium mirror polished finish, regular maintenance will be required to keep that iconic ECB shine. We recommend using our own brand of Aluminium Polish. This formula has been tried and tested and in our opinion is the world's best standard.

Directions: Apply a small quantity of Aluminium Polish to a clean soft cloth and rub the metal surface. The longer the rubbing the brighter the surface becomes. Wipe off Aluminium Polish with clean soft cloth. Also suitable for motorised buffing machines.

Note: There are more specific details on the polish bottle. Please read before use.

Powdercoated Products

Our powdercoated finishes are very low maintenance. Infact there is actually very little you will ever need to do for this product. Just clean it as you would your car and it will stay looking good as new.

ECB Aluminium Polish

When you're looking for that showroom finish look for your polished automotive products, you can depend on the no compromise quality of ECB Aluminium Polish. This specifically designed product is the best polish available and we guarantee that this \$#!+ works. Within our decades of manufacturing polished alloy products we have trialled a large range of different polishes on the market and believe without a doubt that nothing beats the finish quality of ECB Aluminium Polish.

ECB Aluminium Polish is excellent for use by hand and is ideal for polished bullbars, nudge bar and stainless steel products. This polish will clean, polish and protect your product from the elements whilst bringing your products back to that showroom finish look.



B3FU5020SY

Stage 1

- Test drive vehicle to ensure all driver assists are correctly working and to gauge effectiveness. Park on a flat level surface.
- Apply parking brake.
- Unwrap ECB Bullbar and disconnect mounts. Discard bolts.
- Ensure these instructions are left with the vehicle owner and/or operator.



Stage 2

- Remove two (2) 14mm head bolts (per side) from the bumper bar opening and remove bumper.
- From center of bumper, remove sonar cover, two (2) phillips screws. Gently lever forward at bottom to unclip. Retain screws for refitment later in the process.



Stage 3

- On drivers side. remove one (1) 22mm head bolt and one (1) 14mm head bolt from outer support bracket.
- On passenger side remove two (2) 22mm head bolts from tow hook and one 14mm head bolt.
- Retain outer support bracket for refitment.



Fuso Canter Narrow Cab

Stage 4

- Remove two (2) screws from the back of indicator/park light located inside the door opening (per/side).
- Remove light by sliding it outwards and disconnecting the wiring.



Stage 5

- Install wiring harnesses (supplied) between disconnected harness and indicator / park lights on vehicle. Run wiring out from under lights ensuring clearance from sharp edges and moving parts.
- Route wiring through the cavity under the headlight away from any sharp edges.
- Refit lights using original equipment screws.

Stage 6

- Disconnect wiring harness from sonar unit.
- Remove sonar unit from bracket by removing three (3) 10mm head nuts.
- Extend harness by releasing from retaining clip.



B3FU5020SY

Stage 7

- Fit steel mount (supplied) to inside of chassis rail using outer support brackets previously removed from vehicle, one (1) M14 x 40mm bolts, spring washers and flat washer, one (1) M10 x 40mm bolts, spring washers and flat washers (per side) (supplied).
- In rear hole install one (1) M14 x 40 bolt, flat washers and nyloc nut (supplied).

NOTE: outer support brackets previously removed from vehicle have captive nuts in both M10 and M14 sizing.

- Fit two (2) M10 x 40 bolt, spring washer and flat washer to front of mount (per side) (supplied)
- Align mount and tighten all bolts.



Stage 8

- Relocate sonar unit onto sonar bracket (supplied) with M6 x 25mm bolts, M6 flat washers and M6 nyloc nuts. Fit sonar and bracket onto steel mounting bracket using two (2) M8 x 30mm bolts, spring washers and 5/16 flat washers (supplied).
- Reconnect sonar unit.



Stage 9

- Fit ECB LED indicator / park lights into protection bar as per instructions supplied with the LED indicator kit. NOTE: Ensure park light is to top.
- Connect wiring and check indicator/ park light for correct operation.
- An adaptor harness has been included should the indicator and parking light be opposing when lit.
- Zip ties wiring up to avoid wiring sagging under the bullbar.

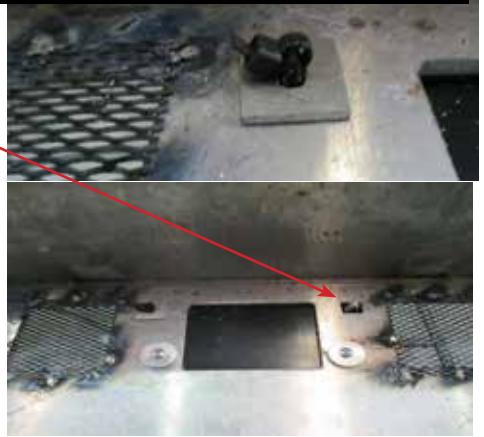


CAUTION: Allow enough wiring for the bullbar to tilt.

Fuso Canter Narrow Cab

Stage 10

- Remove white clip from sonar cover.
- Install sonar cover to center of ECB bullbar using original equipment screws and 6mm alloy spacer washers (supplied).
- For top clips, install onto rear of channel two (2) 2mm alloy washers (supplied). Place zip tie (supplied) through hole in cover and secure. The zip tie will stop the cover from falling out.



Stage 11

- Fit protection bar onto steel mounting bracket using two (2) M14 x 70 bolts, flat washers and nyloc nuts (supplied) in lower pivot points. Tighten nuts until nut hits alloy only. Do Not overtighten.
- Lift protection bar up to correct position.
- Check positioning of protection bar against cabin and sonar unit.



Stage 12

- Tilt protection bar into position and install eye bolts. Tighten firmly.
- Check all electrical components for correct operation.
- Place the tilt cab sticker (supplied) on the rear of the cab adjacent to the cab release mechanism.
- Test drive vehicle to ensure vehicle systems are working as per manufacturers specifications.



Final Checks & Installation Kit

Ensure Number Plate is Clearly Visible

Note: When fitting/refitting the licence plate to the vehicle, ensure there is no obstruction to licence plate vision in accordance with local authorities. If required relocate licence plate to an alternate location.

Further VFPS Notes

1. Do not attach VFPS to the vehicle using anchorages not intended for this purpose (e.g. engine mounting bolts).
2. Do not use this product for any vehicle make or model, other than those specified by the VFPS manufacturer.
3. Do not remove the plaque or label from the VFPS.
4. Do not modify the structure of the VFPS in any way.
5. No accessory or fitment should project forward of the VFPS forward profile.
6. **Ensure these instructions are left with the vehicle owner and/or operator.**

Important Information

Periodically check bolts and nuts for correct tightness, especially if traveling on rough roads.

Installation Kit

1 - Steel mounting bracket	6 - M10 Spring washers
1 - Sonar mount	6 - M10 Flat washers (H/D)
2 - 30 x 11 x 6mm round washer plate	2 - M8 x 1.25 x 30mm bolts
2 - 25 x 25 x 2mm Alloy washer plate	2 - 5/16 x 1 x 16 flat washers
2 - 3/4 Eye bolts	2 - M8 Spring washers
2 - 3/4 Flat washers	3 - M6 x 25mm bolts
2 - 3/4 Nylon flat washers	6 - M6 Flat washers
4 - M14 x 1.5 x 40mm bolt	3 - M6 Nyloc nuts
2 - M14 x 1.5 x 70mm bolts	1 - Pair LED Indicator/park (ICLED104BLK)
10 - M14 Flat washers	1 - Harness Kit (ICHCANTER)
2 - M14 Spring washers	1 - Adaptor Patch (ICH00PIADAP)
4 - M14 x 1.5 Nyloc nuts	4 - 150mm zip ties
6 - M10 x 1.5 x 40mm bolts	1 - Tilt cab sticker

Finished Product



Warranty Registration

Contact Details

Name: _____

Address: _____

Product: **B3FU5020SY**

Email: _____

Phone: _____

Work Order Number: _____

You can find this on the silver label
of your ECB product.

By submitting this registration you automatically subscribe to ECB's mail outs.
You can unsubscribe at any time.

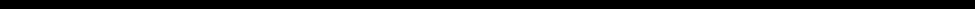
Register Online

For online registration please go online to www.ecb.com.au/warranty-registration
If you have any questions please contact our national office on 1800 069 145 or
www.ecb.com.au.



PN: B3FU5020SY
Please post to: PO Box 122,
Margate QLD 4019

Notes



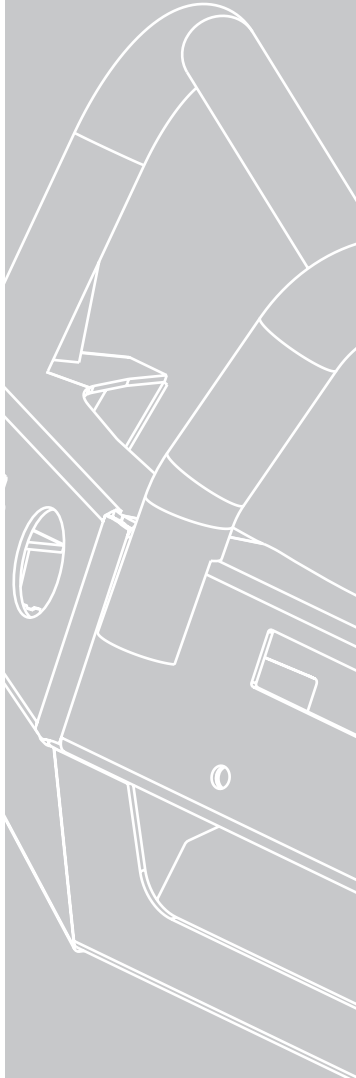
A series of 20 horizontal lines for writing notes, spaced evenly down the page.

_____ Full Name

_____ Date

REPLACES: 03.08.20

REVISED: 09.02.21



1800 069 145
www.ecb.com.au

Strongest Built Australian Made Lifetime Warranty

29 Snook St, Clontarf QLD 4019
PO Box 122, Margate QLD 4019